

Emergency Management Plan



2024

Loxton North School & Preschool



Government of South Australia
Department for Education

Incident response group

Each site will have an Incident Response Group (IRG) stood up during an actual or imminent occurrence of an emergency. The group will be responsible for implementing the action plans in response to various situations, in accordance with the Emergency Management Plan.

Figure 1 below shows an *example* of an Incident Response Group and includes **mandatory roles** of an **Incident Controller**, a **Communications Officer** and an **Operations Officer**. In the case of smaller sites, the Communications Officer and Operations Officer may be the same person or, where appropriate, all three roles may be performed by the same person.

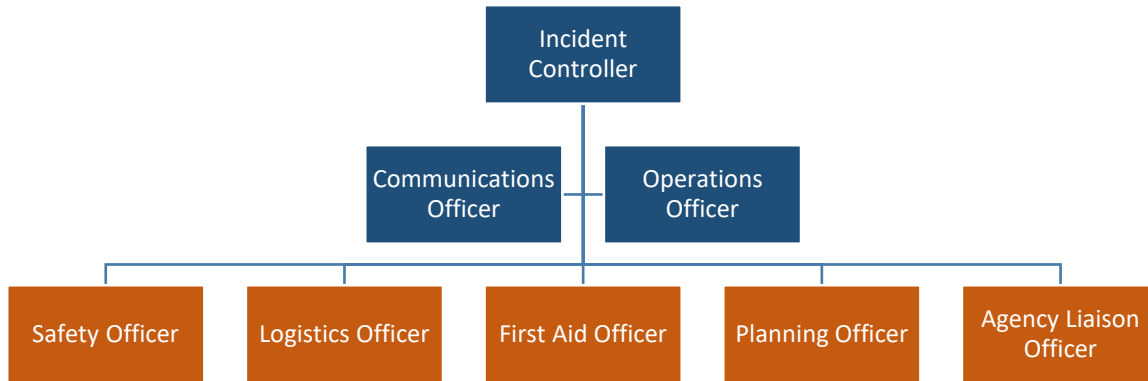


Figure 1 Example of an Incident Response Group, including mandatory (blue) and optional roles (orange)

Summary Table for Incident Response Group - Roles and Responsibilities

Role	Responsibilities	
	Following enactment of initial emergency response	Post emergency
Incident Controller	Provides leadership, directs, and coordinates resources to ensure the safety of occupants at the site	Collates relevant information from various members of the IRG. Provides input to facilitate review of the actions taken and recommendations to amend plans
Operations Officer	Oversees the implementation of the relevant action plans. Responsible for managing, supervising, and monitoring ongoing operations.	Assesses damage to property and to restore facilities and services.
Communications Officer	Manages and monitors all communications with internal and external agencies e.g., Security and Emergency Management, emergency services or parents/caregivers	Issues communiques for staff, students, parents/caregivers, and the community. Attends to queries relating to the incident.
Safety Officer	Works closely with other members to ensure work, health, and safety of occupants at the site during the incident.	Reviews the safety of the site and its facilities. Makes recommendations to mitigate resultant risks.
Logistics Officer	Manages the logistical needs, including equipment, services, and manpower to facilitate the operations.	Reviews the status of the emergency equipment and services. Makes recommendations to reinstate them.
First Aid Officer	Administers first aid to occupants. Documents occurrences of illnesses and injuries requiring treatment.	Reviews the status of the first aid equipment. Makes recommendations to reinstate them.
Planning Officer	Collects and evaluates information related to the incident and resources. Formulates strategies to mitigate identified risks for development for implementation by the Incident Controller.	Liaises with the Incident Controller and Operations Officer to review the incident and risk identified during the emergency. Make recommendations to enhance the plan.
Agency Liaison Officer	Assists the Communications Officer with liaison with internal and external agencies.	Assists the Communications Officer in the issuance of communiques and to attend to queries related to the incident.

Site profile

Site Name	Loxton North School & Preschool
Address	379 Balfour Ogilvy Ave, Loxton North. S.A. 5333
Site Telephone	08 85841369 mobile: 0428236695
Email	dl.0678_info@schools.sa.edu.au
Hours of operation	8am – 4pm
Name of any other service operated on site eg: OSHC, Dentist, sports, music	Loxton North School R – 6 Loxton North Preschool Loxton North Occasional Care Loxton North Playgroup

Staff/Student information

Number of current enrolments	Loxton North School - 64 Loxton North Preschool - 9
Number of staff	Loxton North School and Preschool- 18
Proportion of staff disability/health factors (%) *Please ensure Personal Emergency Evacuation Plan (PEEP) is completed and stored in local response procedure	None
Proportion of student with disability/special education needs (%) *Please ensure Personal Emergency Evacuation Plan (PEEP) is completed and stored in local response procedure	There are 7 students within our enrolled numbers equating to 9.58%





Tones for activation of emergency procedures

Shelter in place

Alarm tone/alert method used	Shelter Alert Sounded – Your Attention Please. An emergency incident has been reported and is under investigation. Please be prepared to take shelter in your nearest safe zone if instructed to do so.
Duration/pattern of alarm tone	Shelter emergency Sounded – Attention! Attention! Take shelter immediately in your nearest safe zone.
Move to the designated Shelter in building	

Lockdown

Alarm tone/alert method used	Lockdown Emergency – Attention! Attention! All staff code black alert. I repeat, all staff code black alert.
Duration/pattern of alarm tone	Lockdown Emergency – message repeated
Follow lockdown procedure in local response procedures	

Onsite evacuation

Alarm tone/alert method used	Fire Alert – Your attention please. A fire alarm has been activated and is under investigation. Please be prepared to leave by your nearest emergency exit if instructed to go.
Duration/pattern of alarm tone	Fire Evacuation – Attention! Attention! Code Red Alert. Leave now by your nearest emergency exit. Evacuation Emergency – Attention! Attention! Leave now by your nearest emergency exit.
Refer to displayed evacuation diagram	

Offsite evacuation

Alarm tone/alert method used	As for Fire Evacuation & Evacuation Emergency Advise given by Principal or Fire Warden to move to alternated site.
-------------------------------------	---

	This is the Loxton North Football/Netball grounds.
Duration/pattern of alarm tone	As for Fire Evacuation & Evacuation Emergency
Method used to inform building occupants when evacuation is to offsite location is required eg: verbal	Once at on-site evacuation location directive given by Principal or Fire Warden to move to off site location via safest possible route
Follow offsite evacuation procedure in local response procedures	

Services governed by the *Education and Care Services National Regulations* are required to display this page alongside their evacuation diagrams.

Student collection protocol

Do you have a student attendance record in place?	Yes
Do you have a student collection process in place during emergency?	Yes

Communication process

Do you have a communication process in place for notifying your parents and school community of emergencies and/or bushfire?	Yes
---	-----